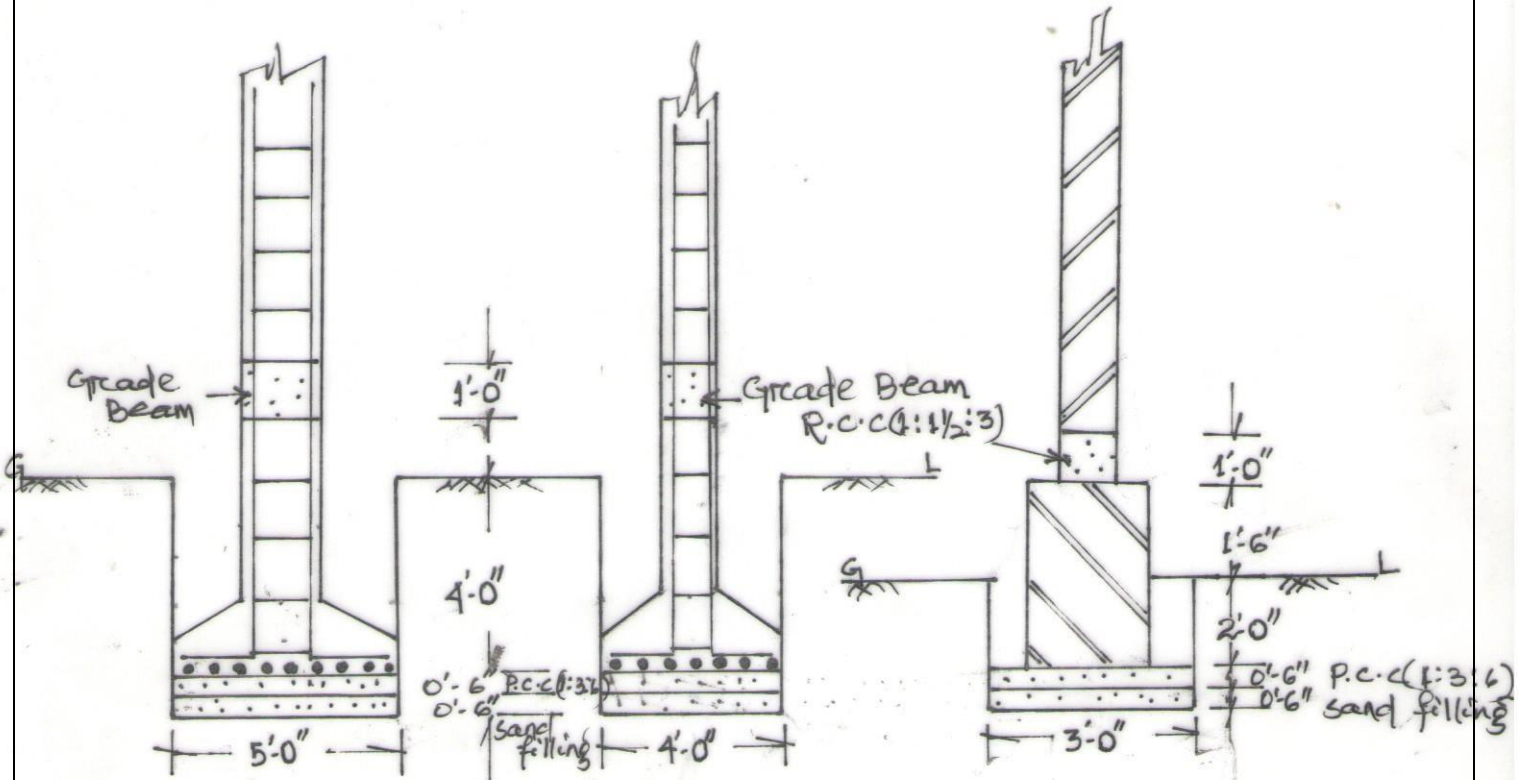


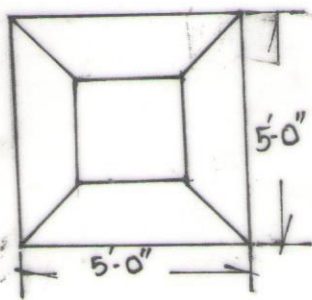
# FOUNDATION DETAILS



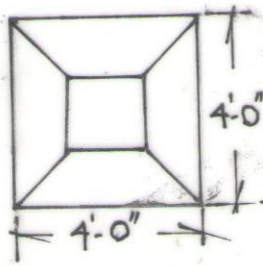
SEC<sup>N</sup>. OF COLUMN-C<sub>2</sub>

SEC<sup>N</sup>. OF COLUMN-C<sub>1</sub>

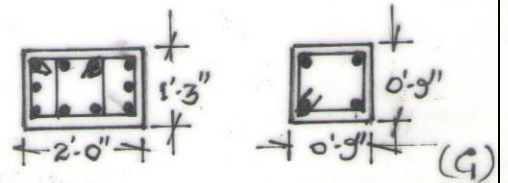
WALL SEC<sup>N</sup>. DETAILS



COLUMN-C<sub>2</sub>



COLUMN-C<sub>1</sub>

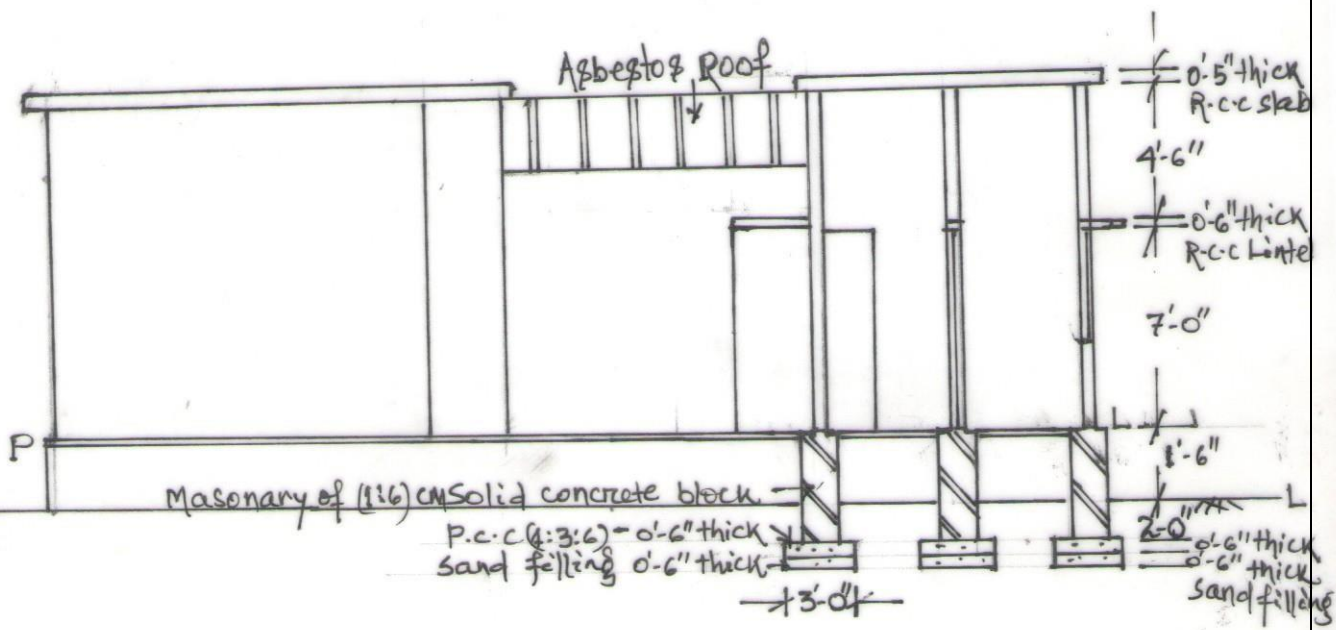


(G<sub>2</sub>) 16mm  $\phi$  bar-4 Nos  
8mm  $\phi$  Ring-0-8" c/c

16mm  $\phi$  bar-4 Nos  
8mm  $\phi$  Ring-0-8" c/c

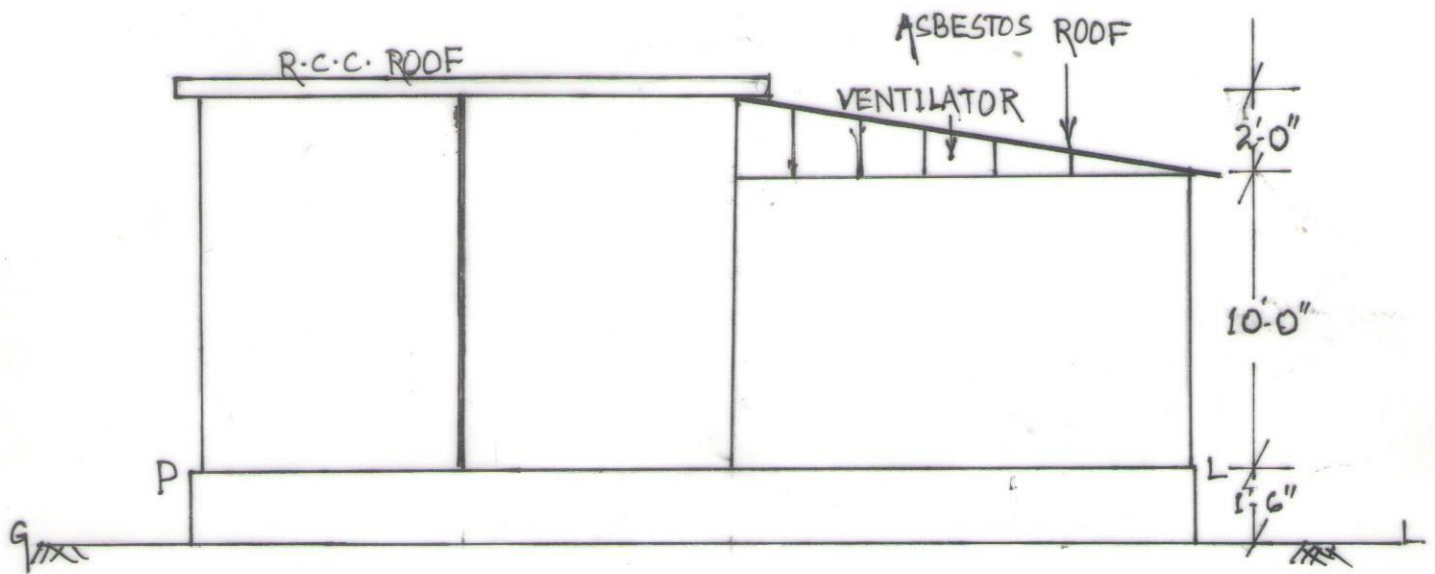
BAR DETAILS OF COLUMN

  
**Asst. Engineer**  
**Bellaguntha Block**

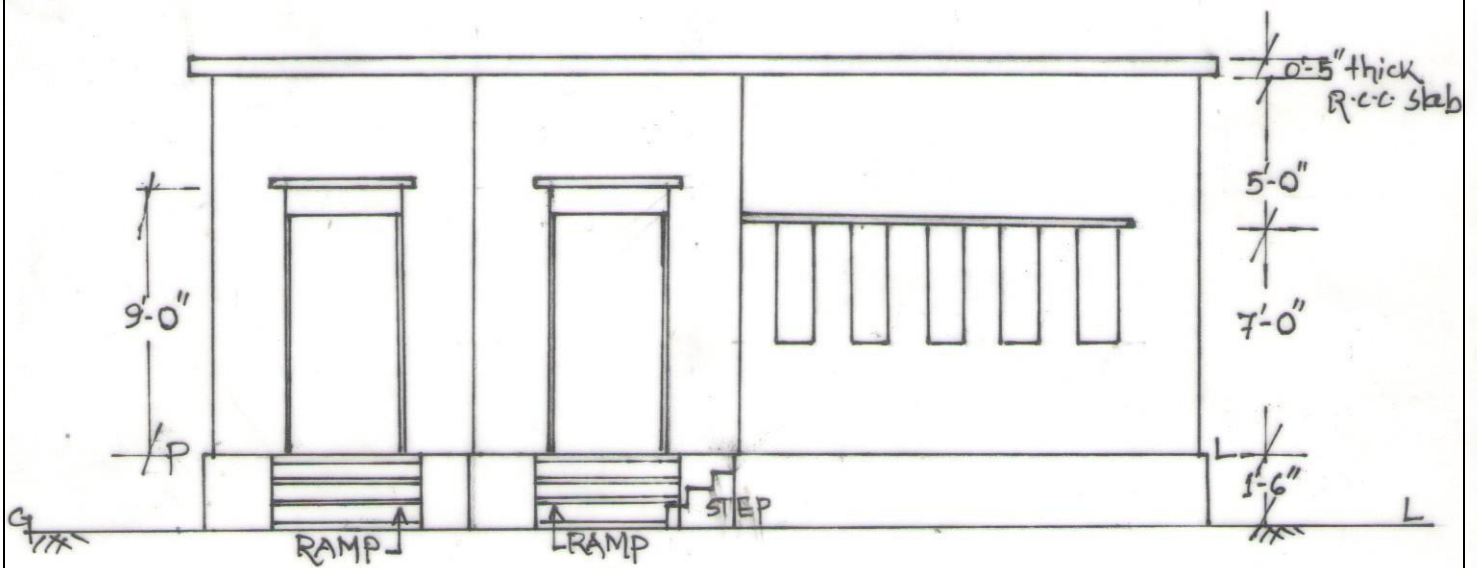


CROSS SECTION AT "ABCD"

*[Signature]*  
**Asst. Engineer**  
**Bellaguntha Block**

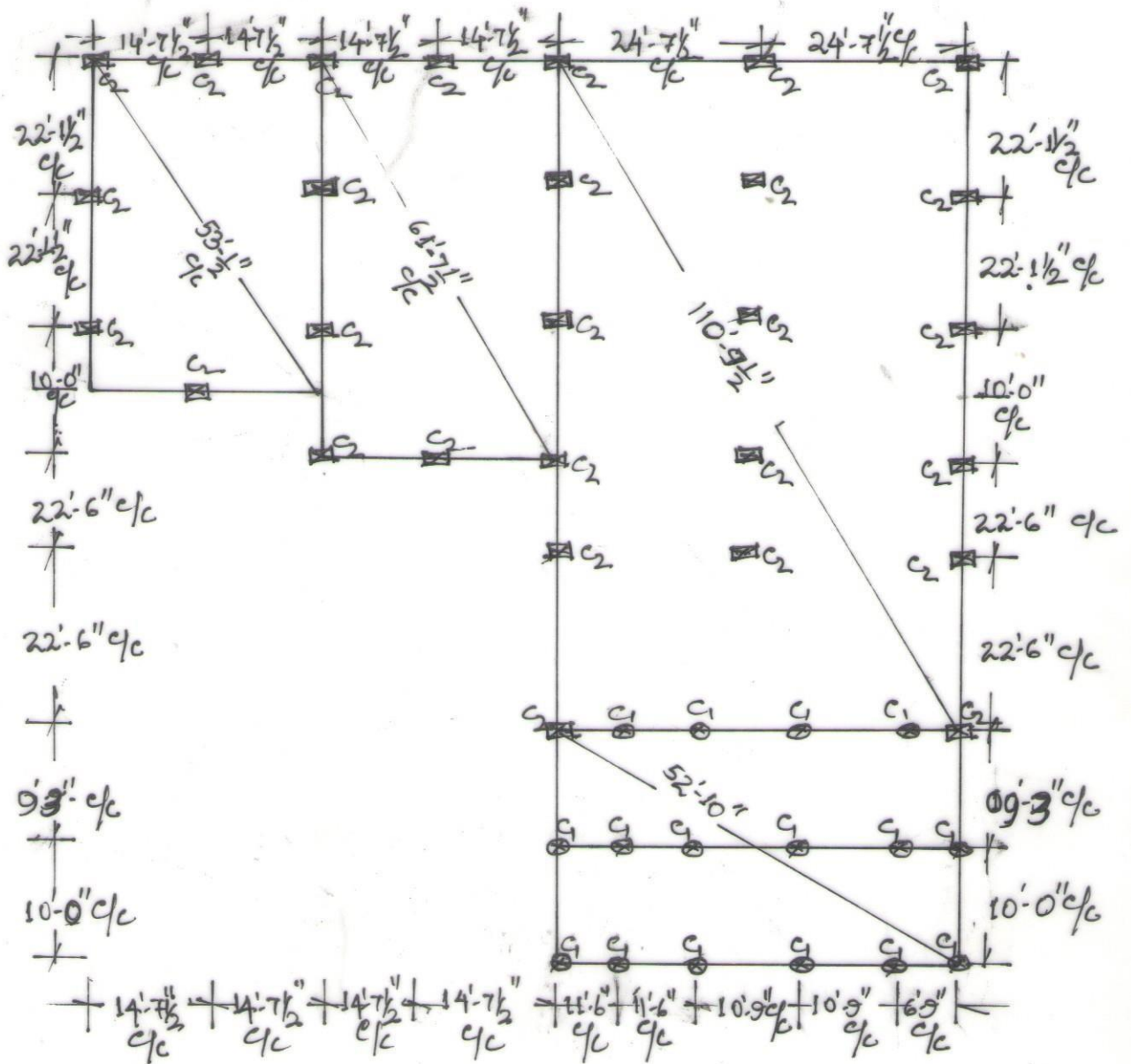


BACK SIDE ELEVATION



FRONT ELEVATION

  
**Asst. Engineer**  
**Bellaguntha Block**



LAYOUT PLAN

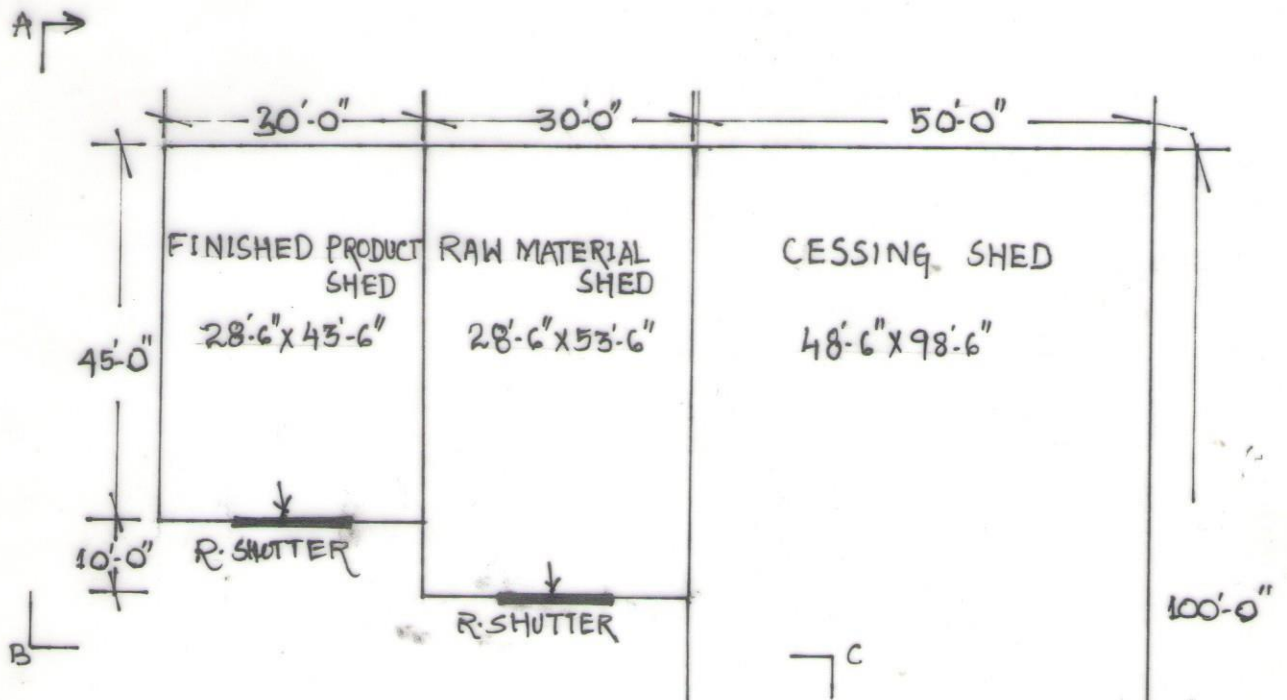
COLUMN - G<sub>1</sub> - SIZE - 0'-9" x 0'-9" - ⊗

COLUMN - G<sub>2</sub> - SIZE - 1'-3" x 2'-0" - ⊠

ALL DIMENSIONS ARE CENTRE TO CENTRE DISTANCE

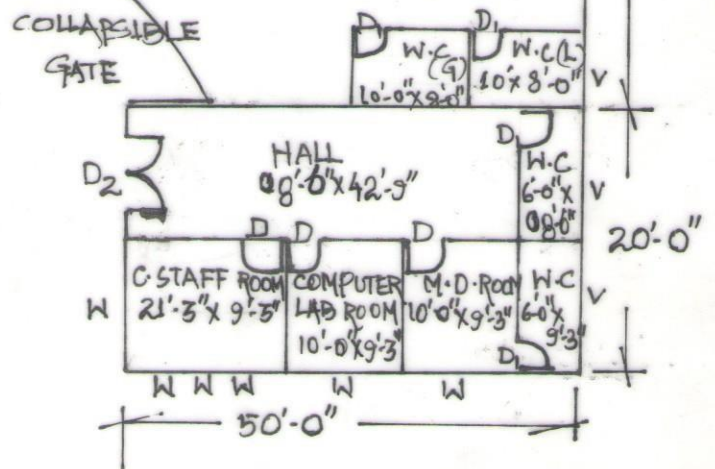
Asst. Engineer  
Bellaguntha Block

# PLAN OF PROPOSED CONSTRUCTION OF CORN CLUSTER CHELIGADA



## DETAILS OF PLINTH AREA

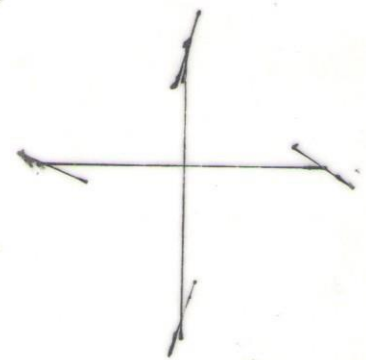
1- FINISHED PRODUCT SHED (R.C.C)	- 1350 SFT.
2- RAW MATERIAL SHED (R.C.C)	- 1650 SFT.
3- CESSING SHED (ASBESTOS)	- 5000 SFT.
4- OFFICE ROOM (R.C.C)	1000 SFT.
TOTAL - 9000 SFT.	



## PLAN

### SPECIFICATION

ITEM	SIZE
DOOR-D	3'-6" x 7'-0"
DOOR-D <sub>1</sub>	2'-3" x 7'-0"
DOOR-D <sub>2</sub>	4'-0" x 7'-0"
COLLAPSIBLE GATE	10'-0" x 9'-0"
R-SHUTTER (M.S)	8'-0" x 9'-0"
WINDOW-W	4'-0" x 4'-0"
VENTILLATOR-V	2'-0" x 1'-6"



  
**Asst. Engineer**  
**Bellaguntha Block**